

Train station (Alexanderplatz)

From Berlin main station - distance approx. 5 km
6 minutes
or Zoologischer Garten - distance approx. 8 km
13 minutes

All S-Bahn trains in eastern direction:

- > S9 (BER Airport)
- > S7 (Ahrensfelde Bhf)
- > S5 (Mahlsdorf; Hoppegarten; Strausberg)
- > S3 (Erkner)

From Ostbahnhof - distance approx. 3 km
5 minutes

All S-Bahn trains in western direction:

- > S9/S3 (Spandau Bhf)
- > S7 (Potsdam Hbf)
- > S5 (Westkreuz)



Airport (Berlin-Brandenburg)

From BER - distance approx. 26 km

from terminal 1/2:

- > RB14 (Nauen Bhf) - 30 min
- > RE7 (Dessau Hbf) - 25 min
- > S9 (Spandau Bhf) - 43 min

Exit: Alexanderplatz

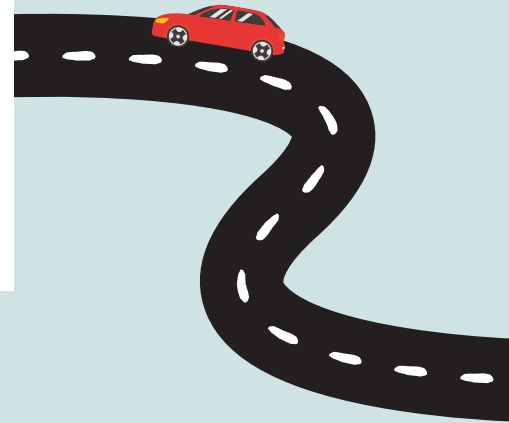
from Terminal 5:

- > S9 (Spandau, Bhf) - 34 min



park inn
by Radisson

BERLIN ALEXANDERPLATZ



Car

The parking garage is located to the right of the hotel (Europcar)

From north

- A114 freeway in the direction of Berlin-Zentrum/Berlin-Pankow
- follow B109/Prenzlauer Allee and later Karl-Liebnecht-Straße into the city for about 7 kilometers

from south & west

- A100 freeway in the direction of Beusselstraße until the end and continue on Seestraße
- after approx. 2 kilometers turn right into Müllerstraße
- follow Chausseestraße and Friedrichstraße for about 3 kilometers in the direction of Berlin-Mitte and turn left at the corner of "Unter den Linden"
- after another 1,8 km turn right into Alexanderstraße

from east

- A100 to exit 20 Tempelhofer Damm and continue on the B96/Tempelhofer Damm in the direction of Kreuzberg and later straight ahead on Wilhelmstraße
- after approx. 3.2 km turn right into Kochstraße
- at the next crossing turn left into Friedrichstraße and follow the road for about 1 kilometer
- then turn right into the street "Unter den Linden" and continue on Karl-Liebnecht-Straße
- after approx. 1.8 km turn right into Alexanderstraße

Park Inn by Radisson Berlin Alexanderplatz

Alexanderplatz 7 , 10178 Berlin
T: +49 30 2389 0



info@parkinn-berlin.com